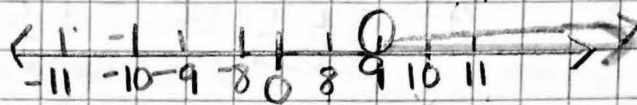


7.6 Solving Inequalities (+)(-)

Ex $3 < 5$

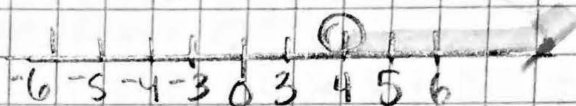
Algebra $X + 4 > 5$
 $\quad +4 \quad +4$

$X > 9$



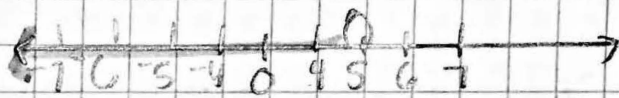
① Solve an Inequality Using addition

Solve $X - 3 > 1 \rightarrow X > 4$
 $\quad +3 \quad +3$

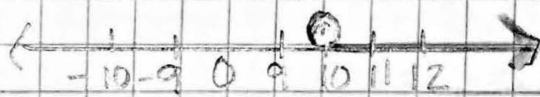


Try!

1) $X - 2 < 3 \rightarrow X < 5$
 $\quad +2 \quad +2$



2) $X - 6 \geq 4 \rightarrow X \geq 10$
 $\quad +6 \quad +6$

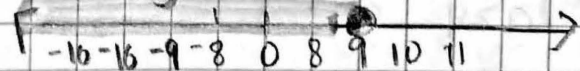


3) $10 \geq X - 1 \rightarrow 11 \geq X$
 $\quad +1 \quad +1$

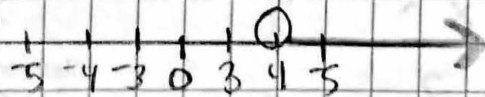


② solve an Inequality Using Subtraction

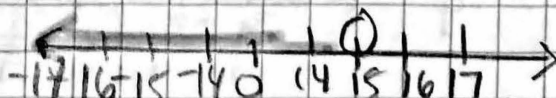
Solve $15 \geq 6 + X \rightarrow 9 \geq X$
 $\quad -6 \quad -6$



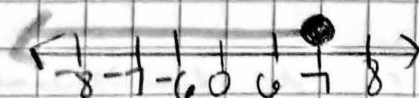
Try! ① $X + 3 > 7 \rightarrow X > 4$
 $\quad -3 \quad -3$



② $Y + 2 < 17 \rightarrow Y < 15$
 $\quad -2 \quad -2$

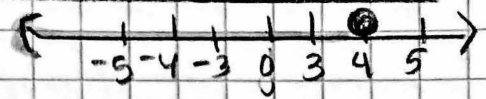


③ $16 \leq m + 9 \rightarrow 7 \leq m$
 $\quad -9 \quad -9$



Pg. 336 (5-18) Pg. 337 (22-24) (29-33)

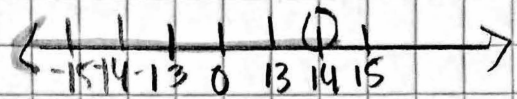
[EX] $x + 8 - 2 \leq 10$ $x \leq 4$



$$x + 6 \leq 10$$

$$\begin{array}{r} -6 \\ -6 \end{array}$$

[EX] $22 > 2 + x + 6$ $14 > x$



$$22 > 2 + x$$

$$\begin{array}{r} -2 \\ -2 \end{array}$$

$$14 > x$$